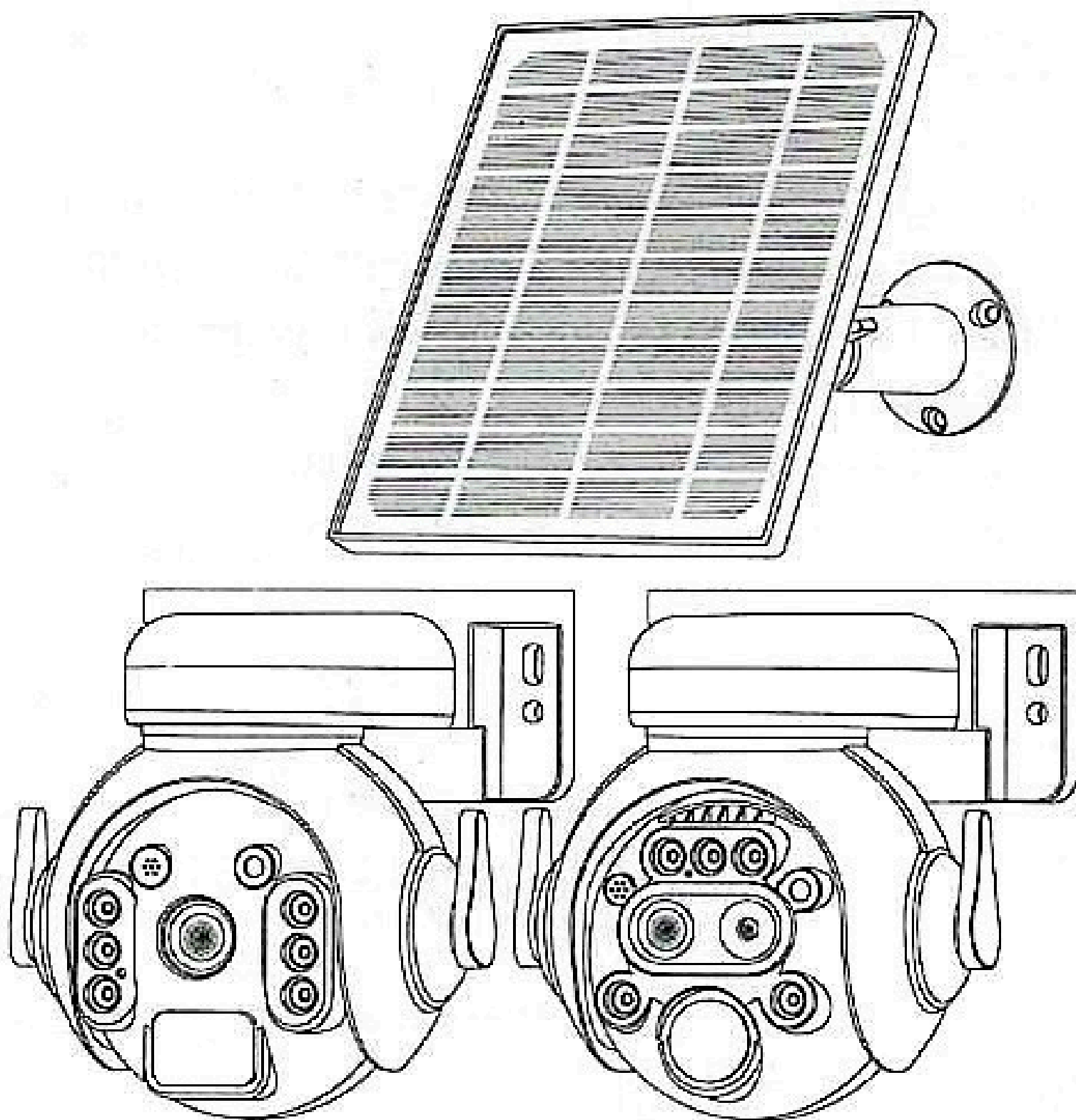


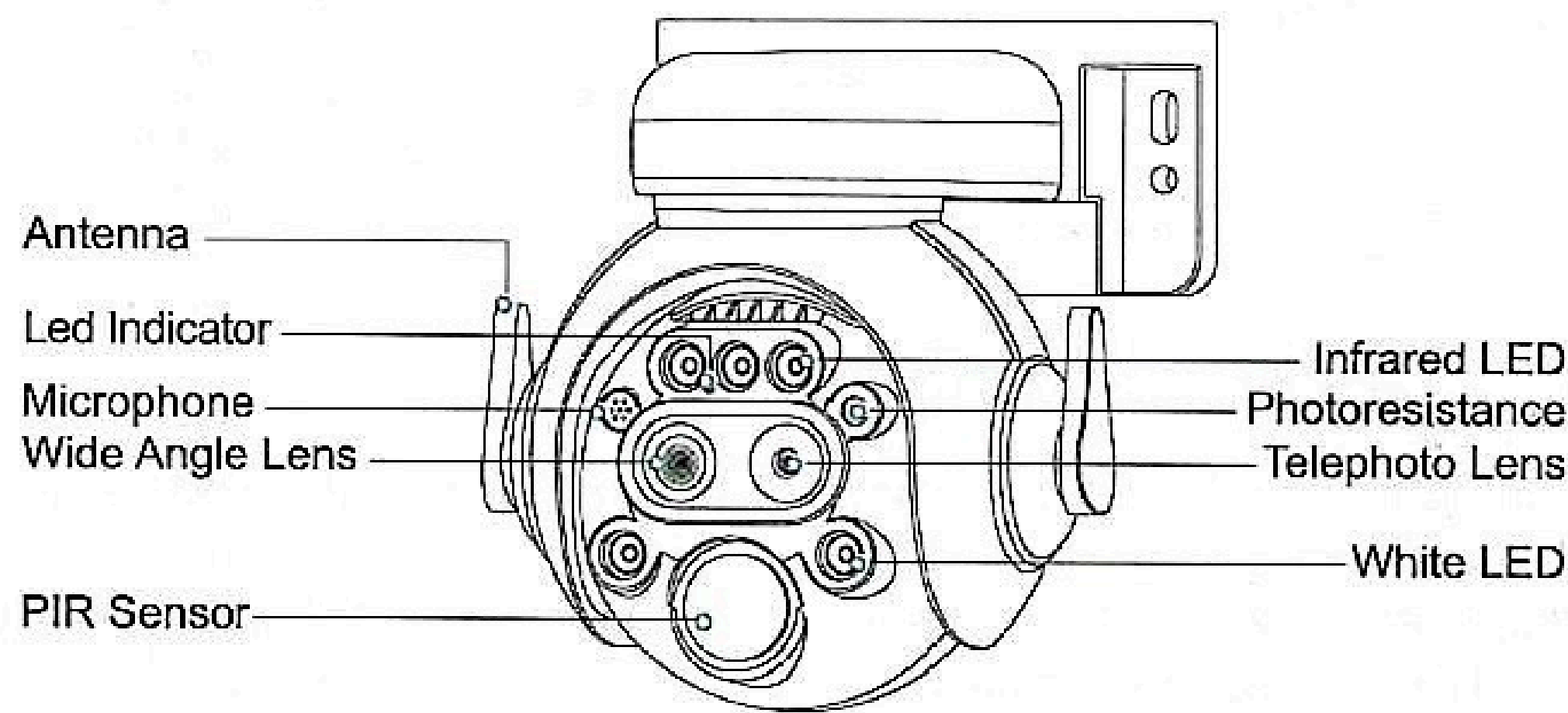
4G Dual Lens Zoom Solar Battery Camera User Manual



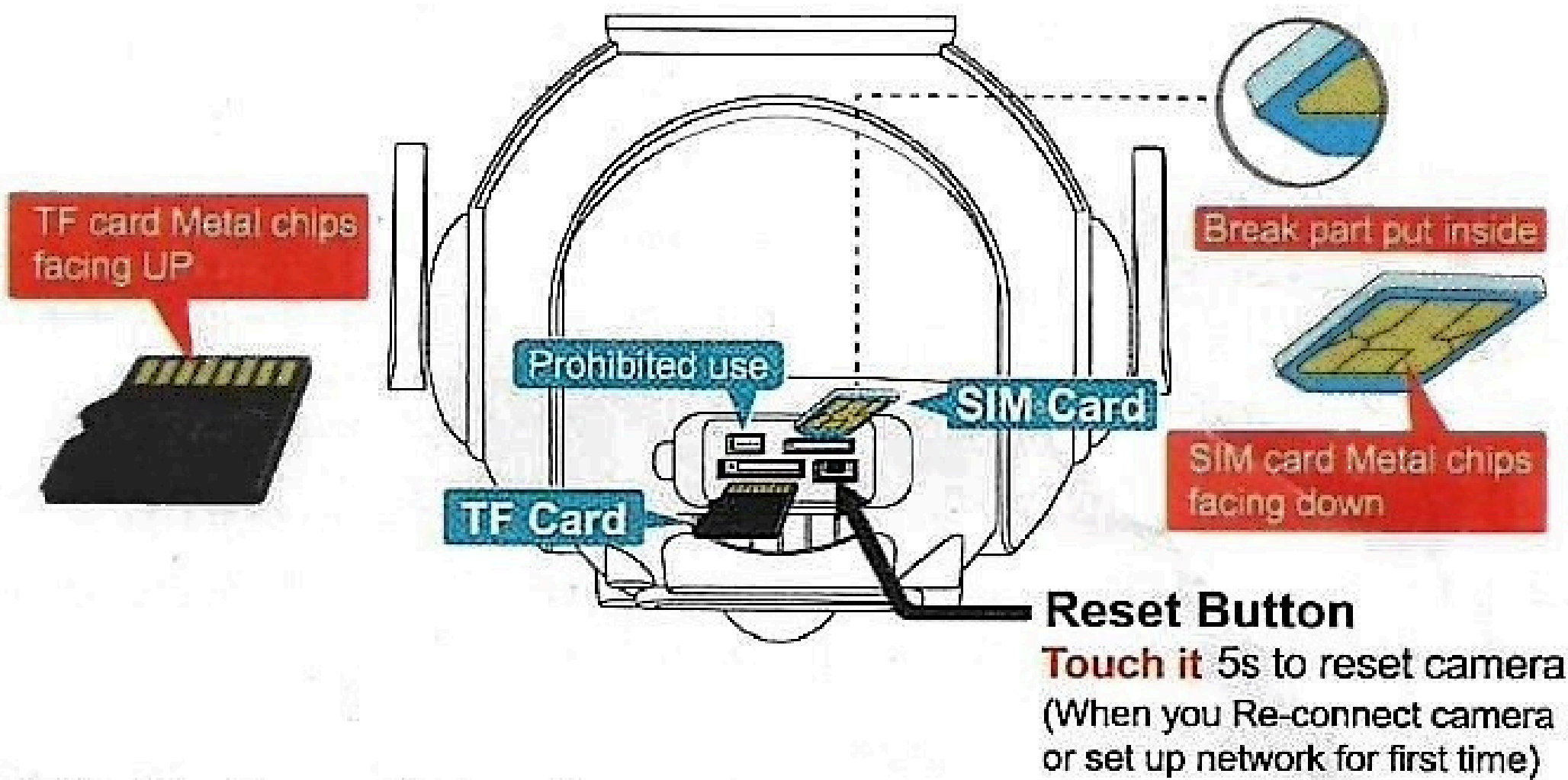
V515.2

1. PRODUCTS & PACKING LIST

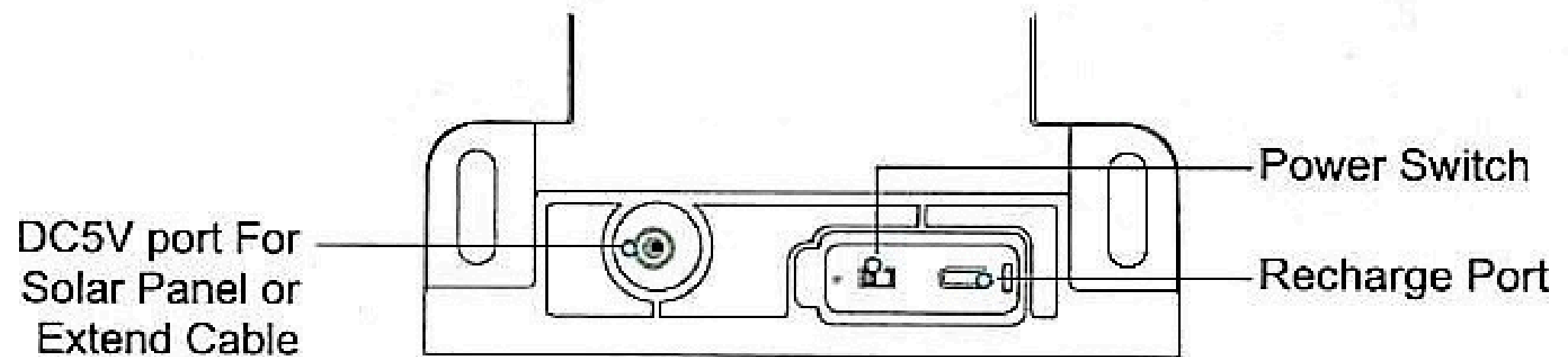
1.1 Product Diagram:



1.2. 4G Camera Card Slot:

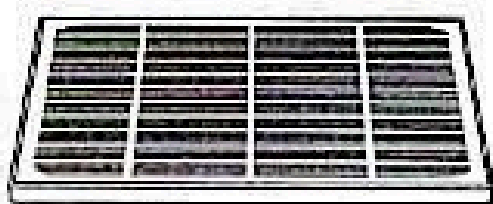


1.3. Battery Interface:

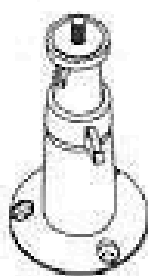


Tips: About 6 hours full charge batteries

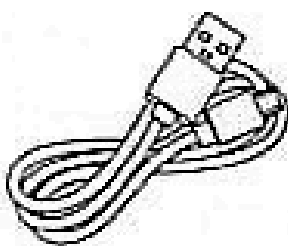
1.4. Packing list:



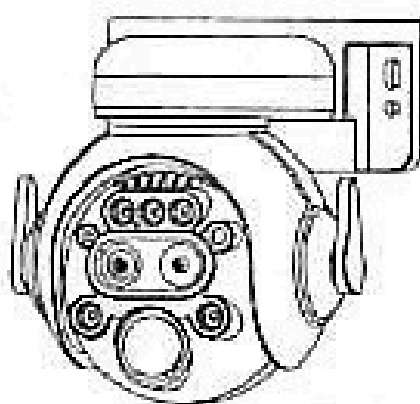
Solar panel *1



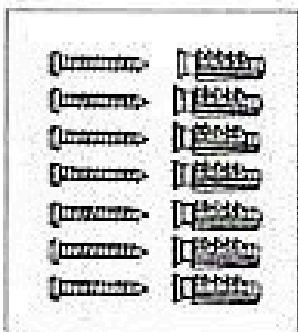
Solar panel bracket *1



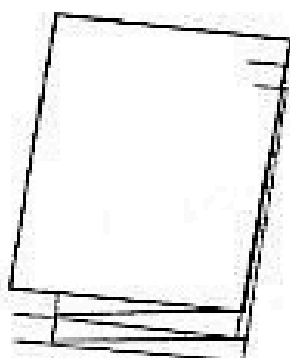
Recharge cable *1



Camera *1



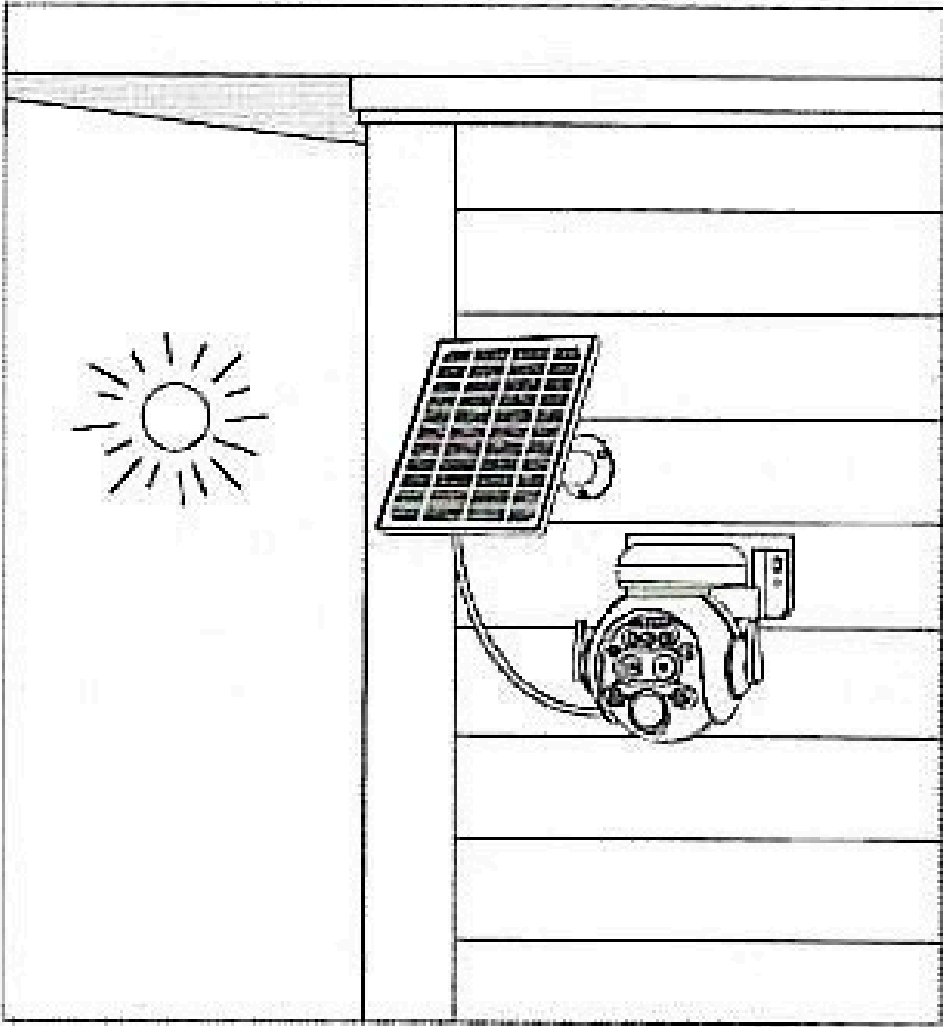
Screw pack *1



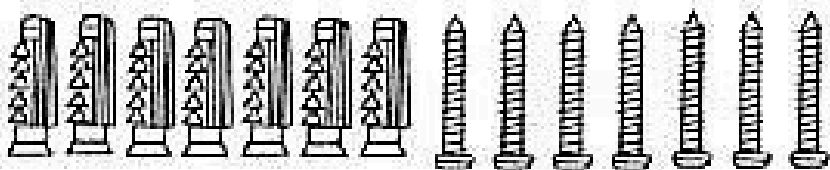
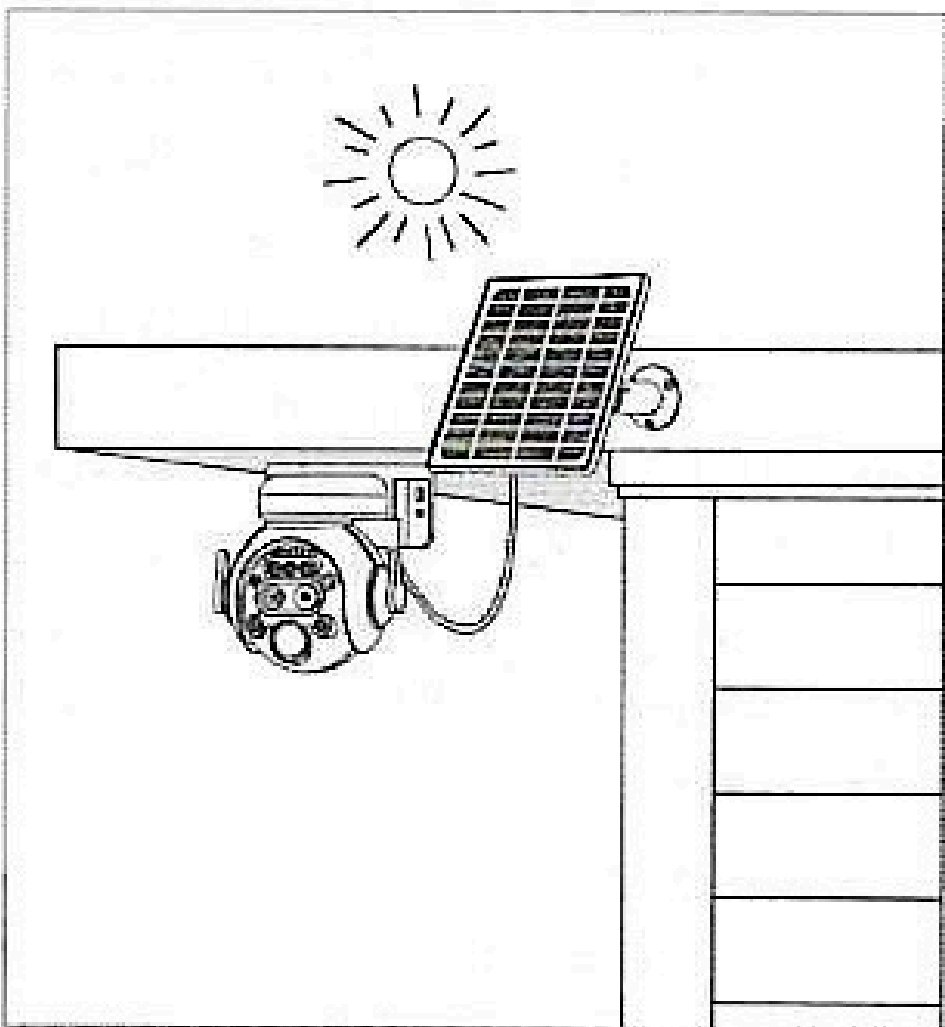
User manual *1

2. INSTALLATION METHOD

2.1 Wall mounting installation



2.2 Ceiling Hanging installation



ATTENTION :

Fully charge the battery when using the camera for the first time.

3. APP REGISTRATION

3.1. Scan the following QR code or search for "UBox" from the App Store(for iOS devices) or Google Play Store (for Android smart phone) to download and install the app.

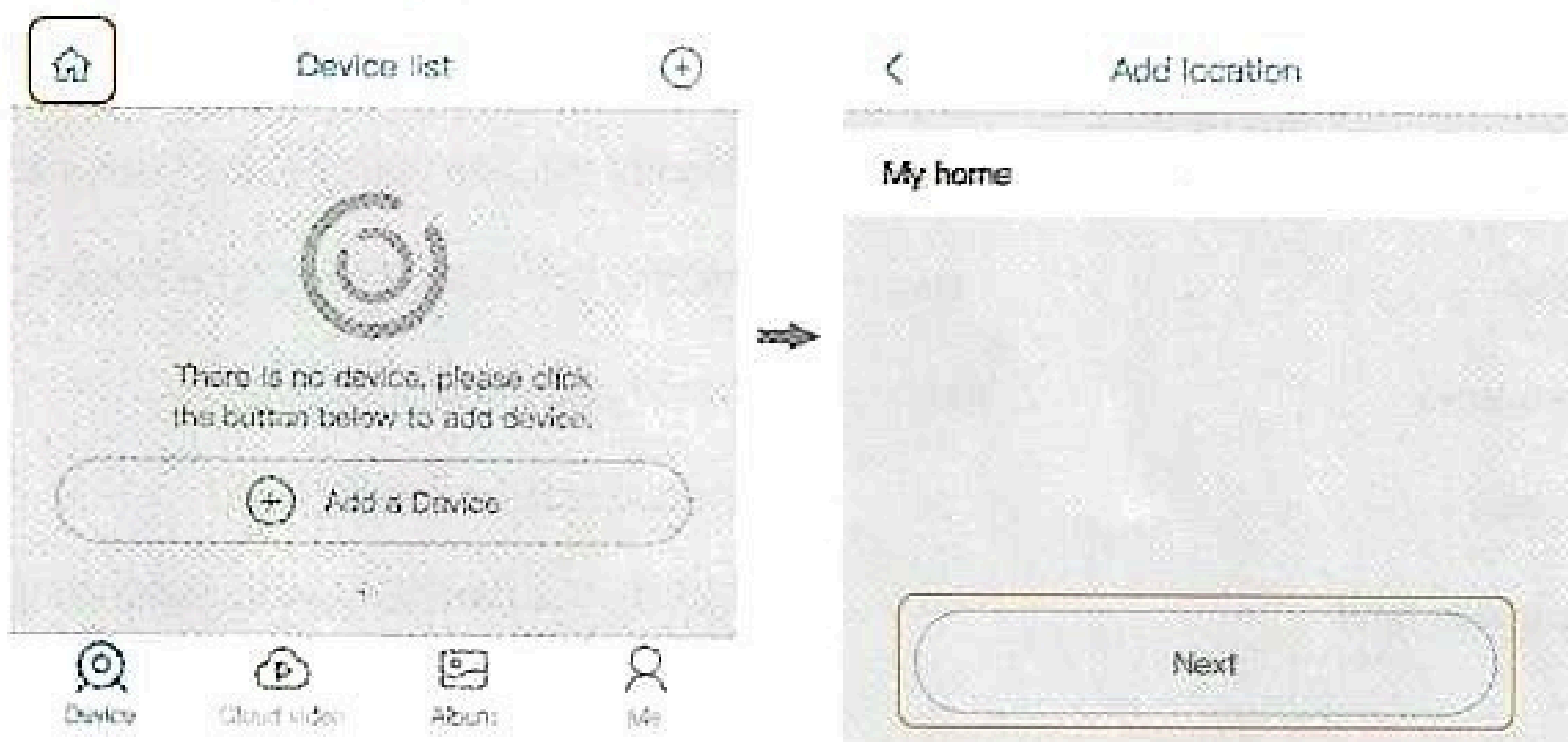


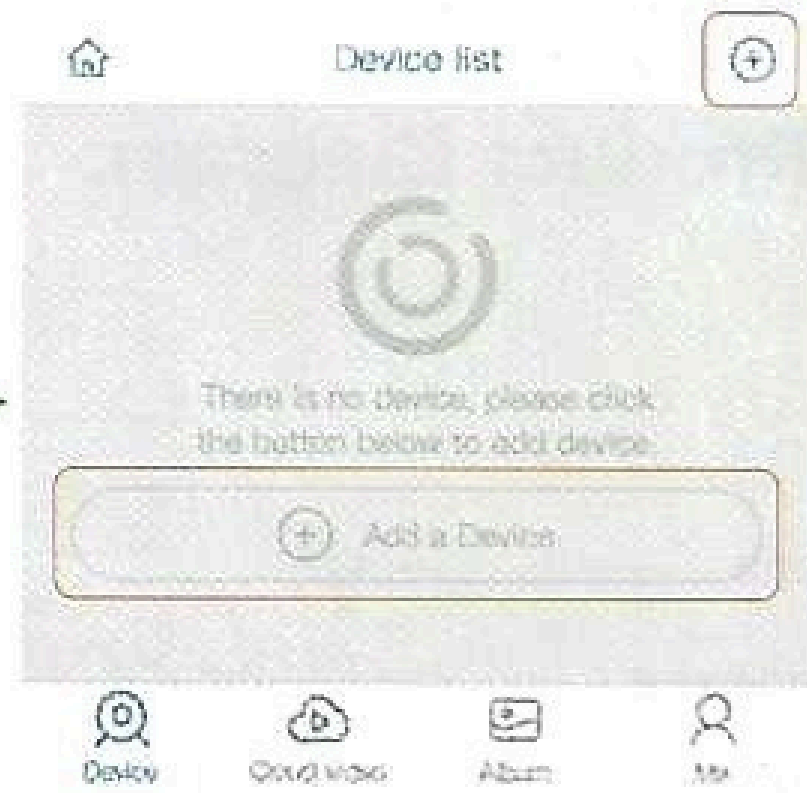
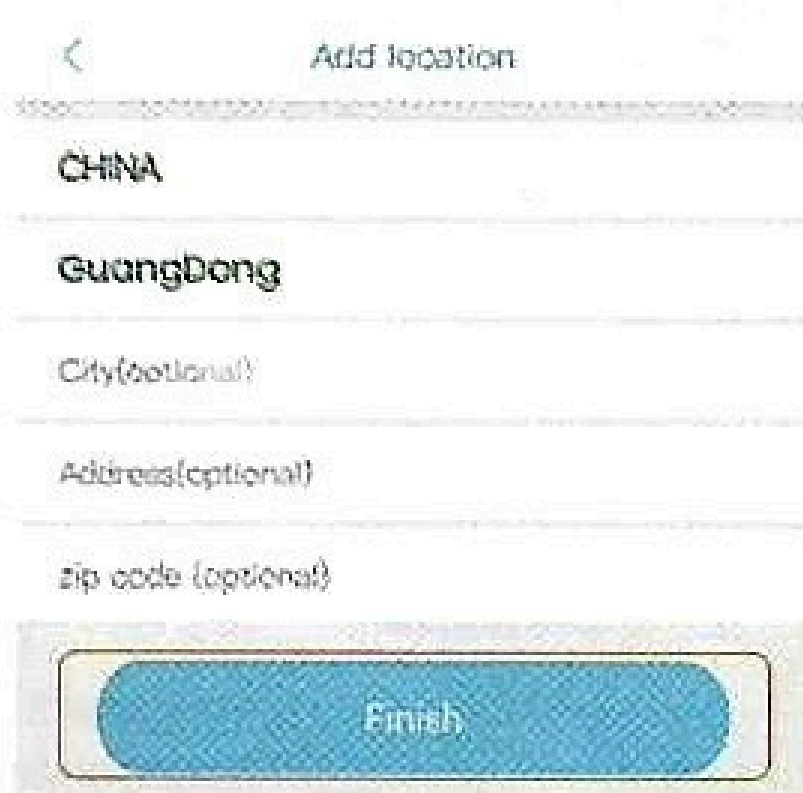
iOS / Android

3.2. Open the app then input your E-mail address then press "Register". Check and select to agree the agreement then your E-mail box will get an verification code.(For better user's experience, please allow to open all permissions to avoid missing any notifications from the app.)

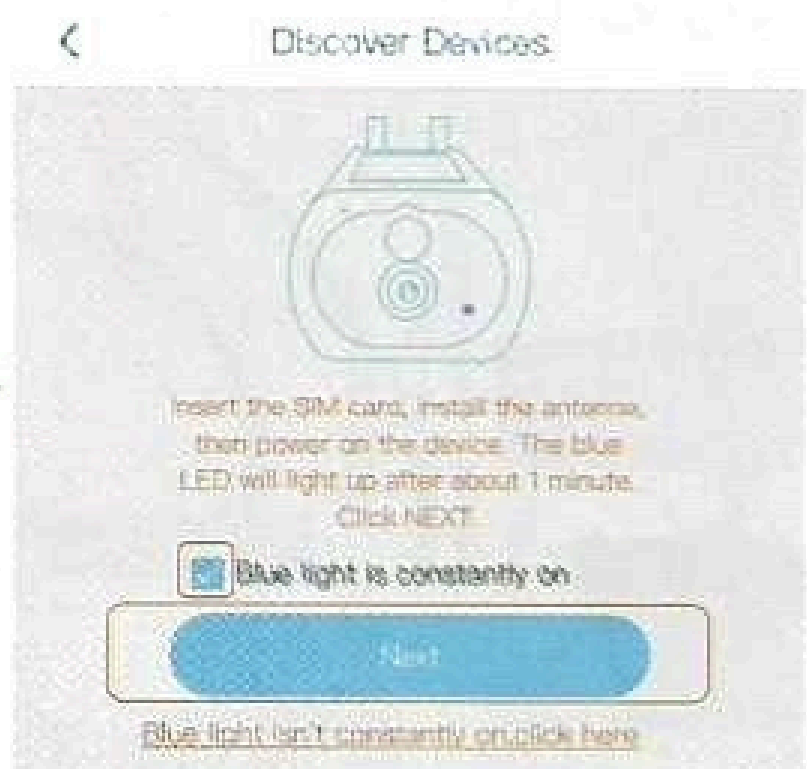
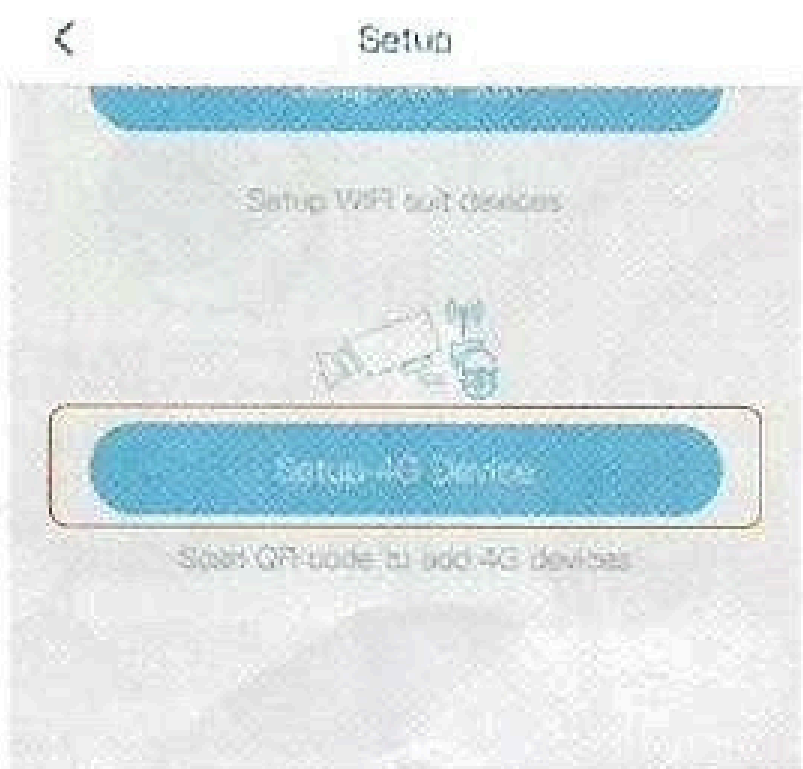
4. 4G CONNECTION

- 4.1. Press 'Add Family' then set the room or position as per reminders.
- 4.2. Enter your family name and then press "Next".
- 4.3. Input the necessary information just like Country, Province, then press "Finish".
- 4.4. Click "Add a Device" to add a smart device





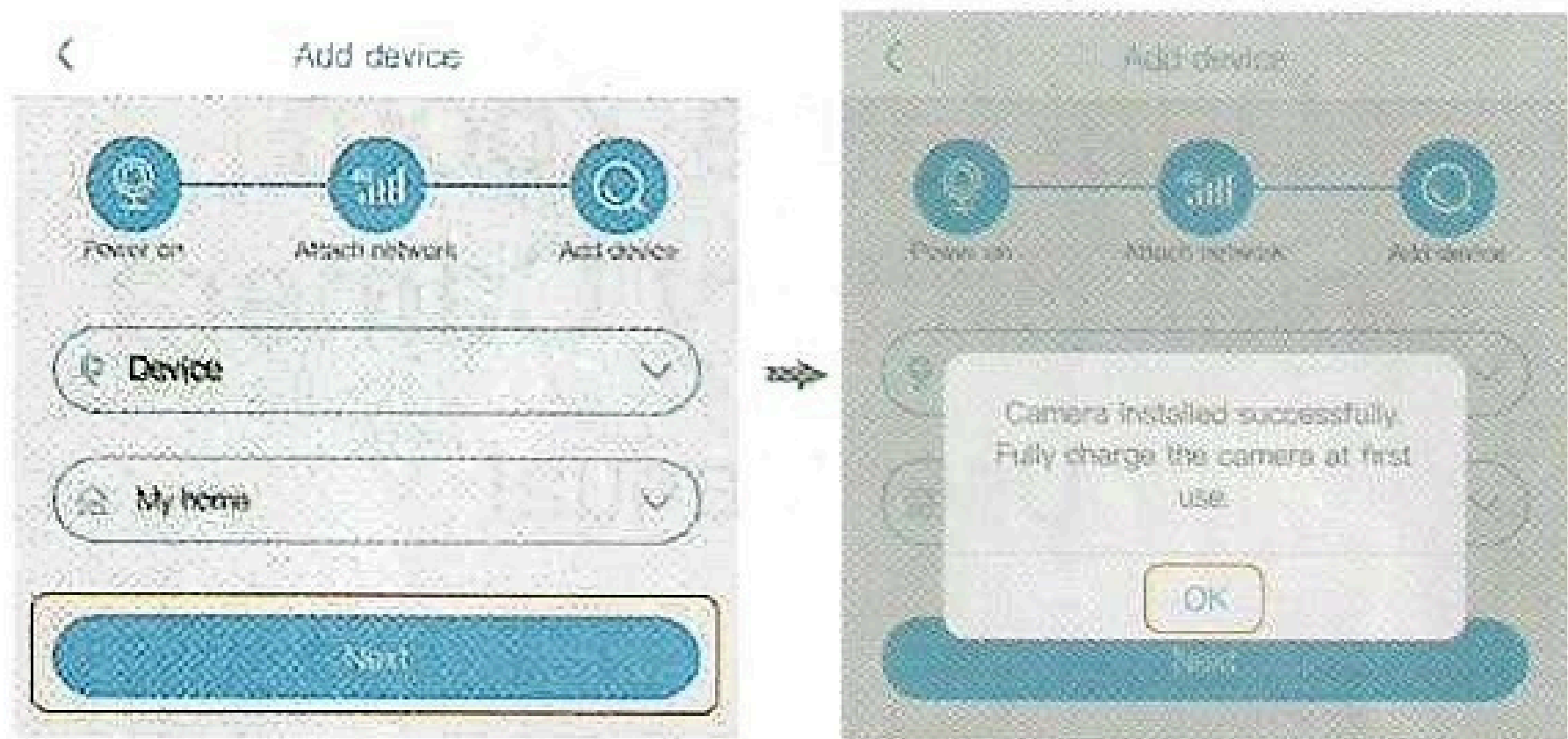
- 4.5. Insert the SIM card into device then put the battery into the device, and some of models need install antenna.
- 4.6. After the power on the device, wait for about 1 minute the device blue LED light up Then press next.
- 4.7. If the device blue LED not light up, please check below config notes.



- 4.8. Find the UID QR code on device, then use APP scan the QR code.
- 4.9. APP are search the device in internet it may take 5-60 seconds.



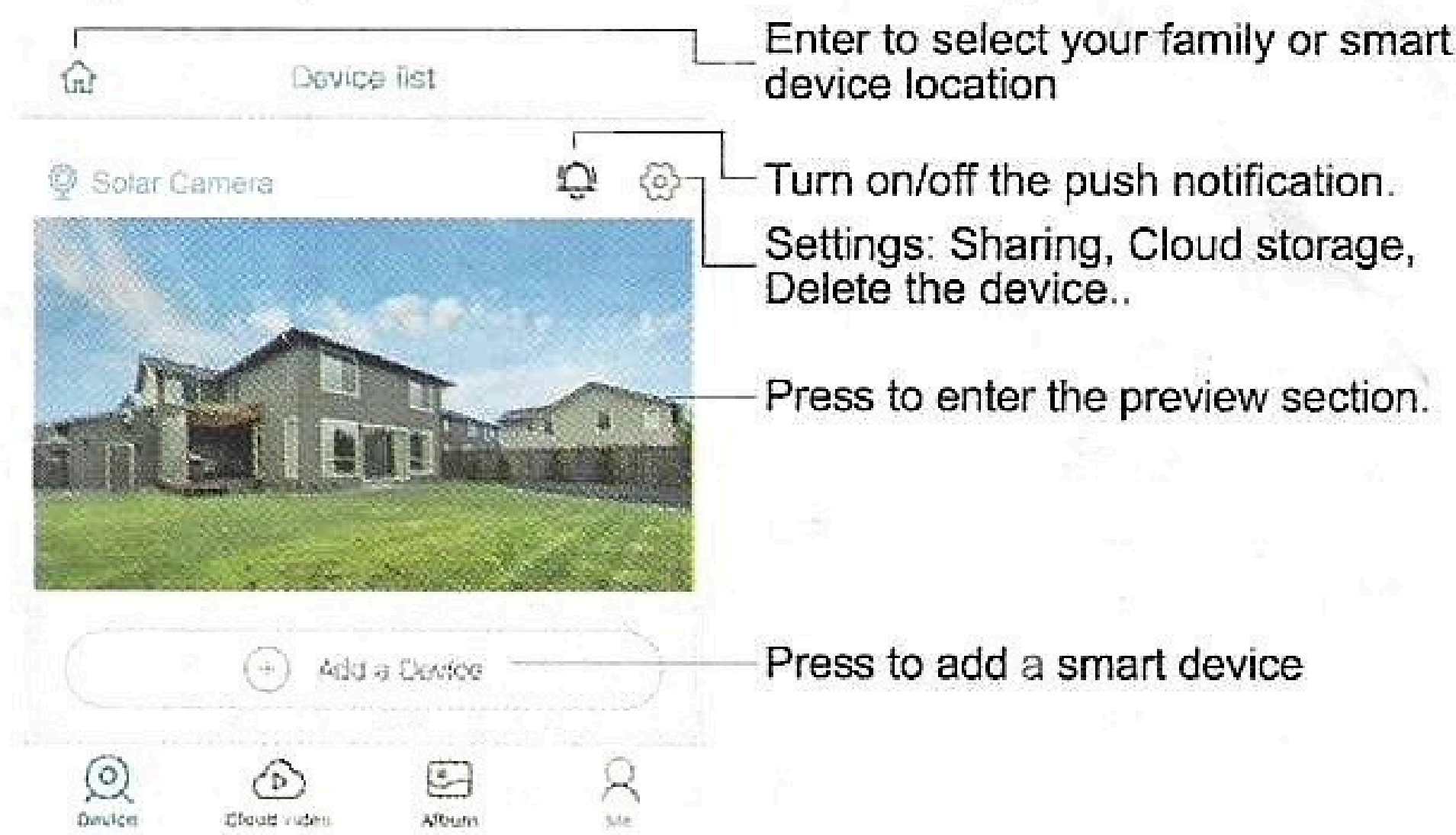
- 4.10. Select the name and device location then press "Next".
- 4.11. The connection is successful, press "OK" to complete the connection.

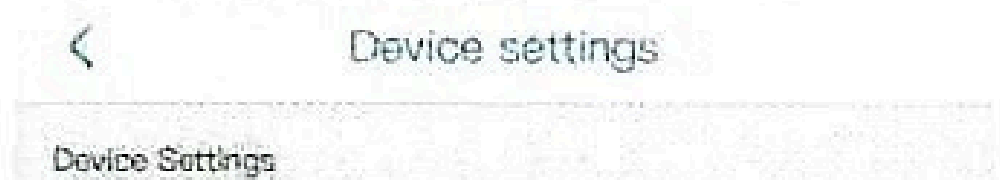
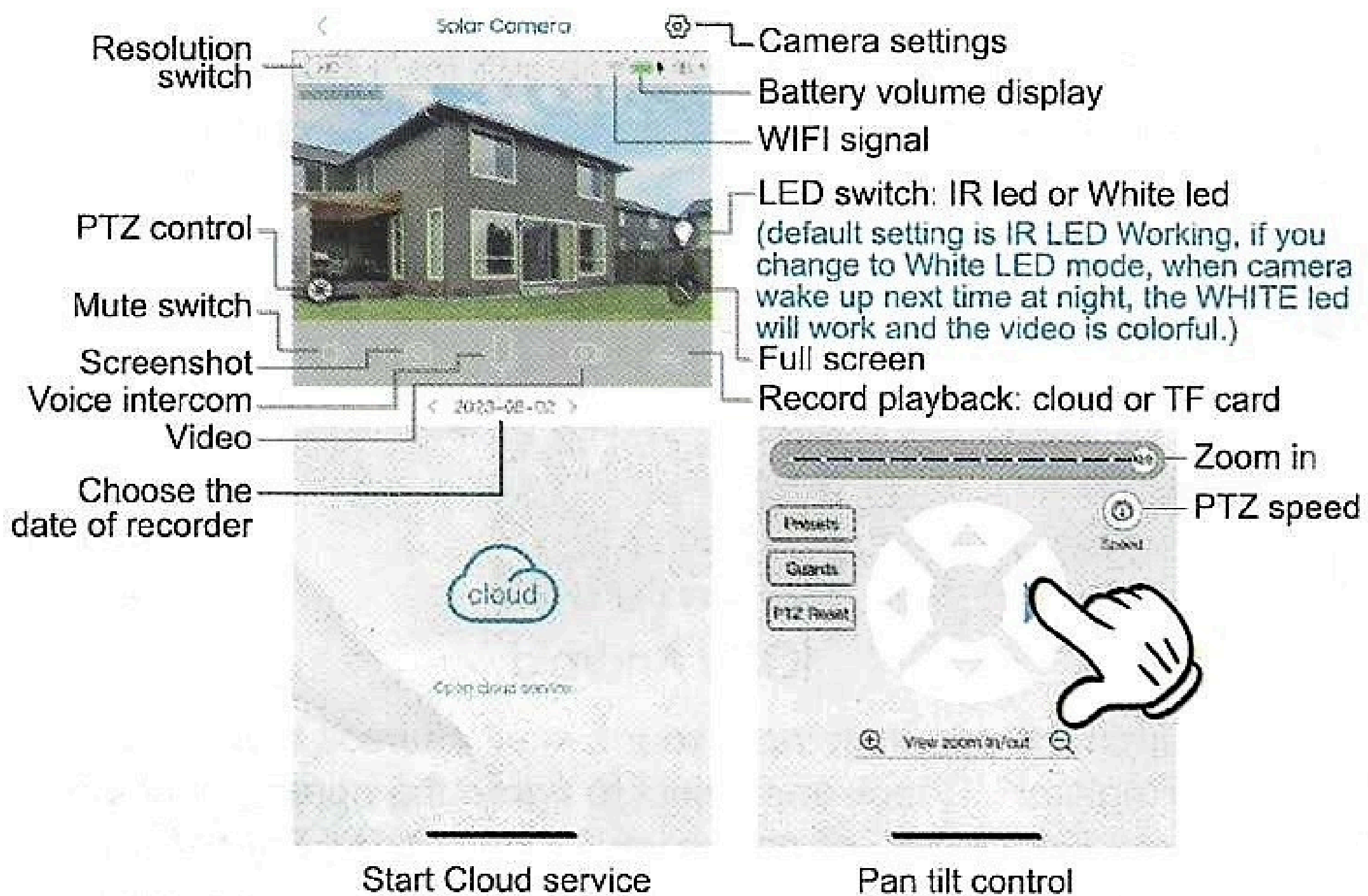


5. DEVICE SETTING

Notes about PIR detection

- * User can change the PIR detection sensitivity in device settings. we recommend to set sensitivity at "Disabled" or "Low" to reduce flase alret and save the battery power in noisy environments.
- * Disabled: disabled PIR detection.
- * Low: dealay 7 seconds PIR detects a moving.
- * Medium: dealay 5 seconds PIR detects a moving.
- * High: dealay 1 second PIR detects a moving.





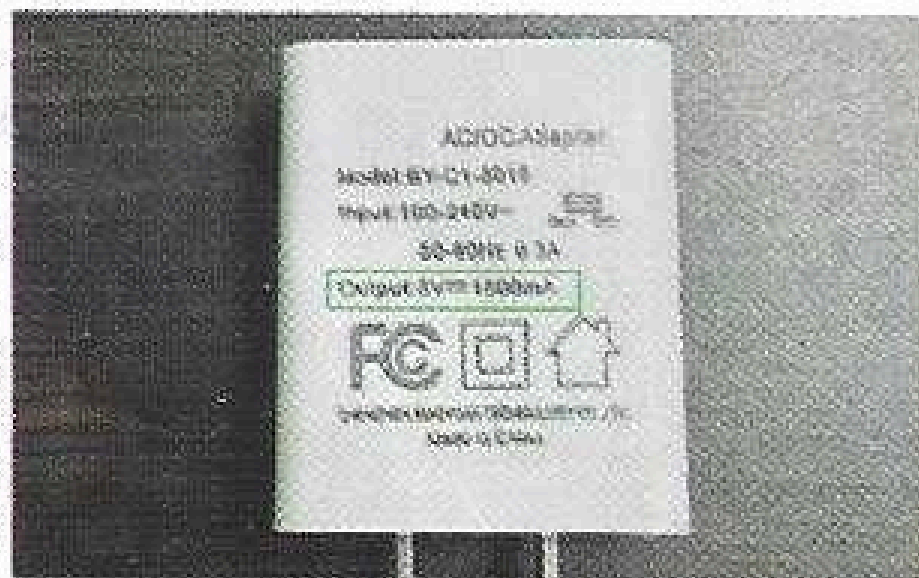
Device name	Front door >	Modify device name
Memory card	Cloud video >	Check the storage capacity, Format SD card
Image flip	Normal >	Image mode modification, normal, mirror, flip
Scene mode	Normal >	Can be modified according to the use scene to obtain a better image
Detection sensitivity	High >	Modify the sensitivity of PIR detection
Sleep delay	15s >	Modify the sleep time of the device
Power frequency	50Hz >	Modify power frequency
LED indicator	On >	Indicator light on/off
Synchronization time		Modify the device time to synchronize with the phone time

6. CONFIG NOTES

Question: Camera can't rotate in any direction or wake up by PIR, only view the video via mobile phone remotly, It seems battery is also full.

Reason: The battery power is below the working voltage at some time, So the protection circuit turns off the power.

Action: Enable the protection circuit of battery again: Use Tpye-C Cable to recharge the camera with DC 5V power supply about 2s-5s, camera will rotate again. (Only Type-C port can enable the protection circuit)



DC 5V ✓

Tips:

About 7 hours for full charge batteries with DC 5V 2A power supply for the first time.



DC 5V~9V/12V/20V ✗

! Forbiddance:

DON'T always charge batteries with type-C port when camera working

6.1 Please charge the battery fully before using the device. The battery life will be affected by the device wake-up time and the number of wake-ups. Therefore, the PIR sensor alarm detection function is used in an environment with a lot of people. It is recommended to turn off or set the device to low sensitivity to reduce device wake-up and call times extend battery life. **When the battery is low, please charge the battery immediately.**

6.2 It is a delicated device with low power consumption design. Everytime the device is awakened and will work for a few seconds. After that, the device will enter standby mode to save power. You can set the work time in the app settings.

6.3 Insert 4G SIM card at first, then power on the camera. If red indicator of 4G camera is light always.

Action: don't worry, please check the "APN name, MNC, MCC" information on your mobilephone setting (access point), then contact seller. we will verify this 4G signal of local telecom operatoris match with the camera or not, then seller will provide solution for you.